

Congregational Meeting

July 8, 2018

Developing - - *"Relationships that Matter"*



OPENING PRAYER

Almighty God, we praise you, honor you and thank you for the many blessings you continue to provide Faith Lutheran Church. Help each of us, Heavenly Father, to fully understand our role today in fulfilling Faith's vision of "developing Relationships that Matter." In the name of your son, Jesus Christ, we pray. Amen.



Why, What, How

Why - - Review: Ministry Plan Implementation and consider an Offer to Purchase surplus property owned by FLC.

What - -

Report: Activities & Giving thru June 2018

Explain: Purchase Offer for Surplus Land

How - - Presentations followed by formal vote.

Ministries Plan - - Highlights

- Noisy Offering
- #TomorrowMatters
- Vacation Bible School
- Small Group Ministries
- Video worship livestreamed
- Choirs for all ages
- Avanti Assisted Living
Worship Services
- Explore Faith & Jump Into
Faith Meetings
- Bethel Bible Study
- FL Day School

Developing ... Relationships That Matter

Reaching more disciples than ever before

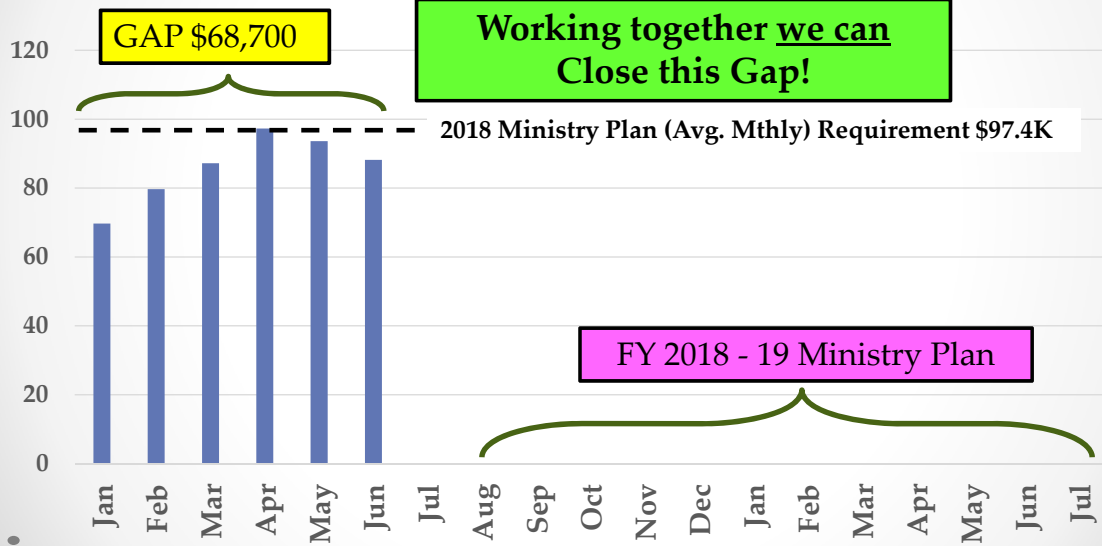
May – June 2018 (About 325 per Weekly)

Includes Worship services, Avanti and On-line



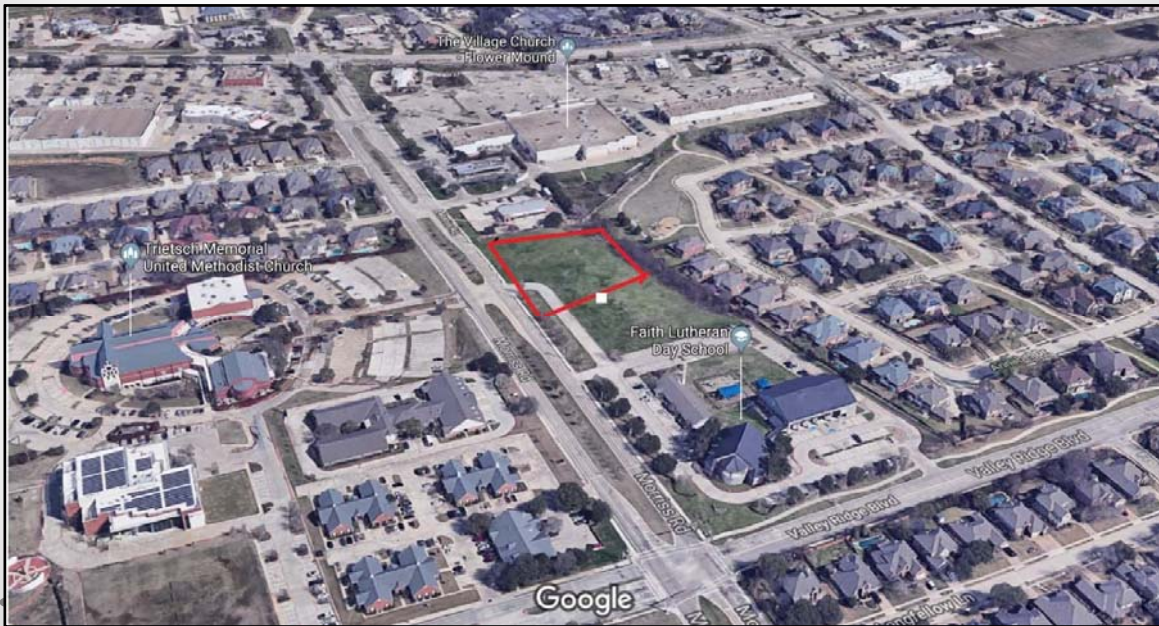
Faith
Come journey with us

Operating Income To date



Faith
Come journey with us

Offer to Purchase 1.75 acres from Faith?





Faith
Come journey with us

Provisions of Land Purchase!

Outstanding Debt: \$1,555,428

Purchase Price (current offer) - - \$9.25 per square foot. Proposed selling price **\$705,127**

Activities to Complete Sale: Zoning modification, feasibility / due diligence period, close on sale.

Net Proceeds (est. \$640,000):

- o *May take up to six months before receipt of funds*
- o *Proceeds to service mortgage - - debt*



Faith
Come journey with us

Council Recommends:

Approval of the Resolution Authorizing the execution of a Contract to sell surplus land totally 1.75 acres.

Questions ?

Congregation Vote



Faith
Come journey with us

Path Forward – What can you do!

PRAY - - *for a successful land sale and that Faith's Ministry Plan will be fully funded*

ACT - - *Do all that you can do . . . All the Time!*

ENCOURAGE and SUPPORT all to:

- o *Continue to Seek opportunities to serve*
- o *Invite others to become a Faith Mission Partner*



Faith
Come journey with us



SEEK



STRETCH



SERVE



SHARE

Thank You!
For Attending

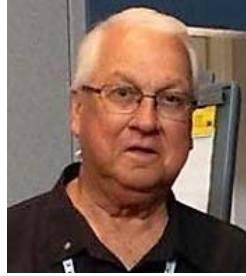
Developing ... Relationships That Matter



Larry Patterson
Council President



Anna Geleske
Council Vice-President



Gene Davenport
Council Treasurer



Bruce Turner
Council Secretary



Maury Tiller
Member At-Large



Sinikka Marten
Member At-Large



Richard Hinojosa
Member At-Large



Cynthia Murphy
Member At-Large